

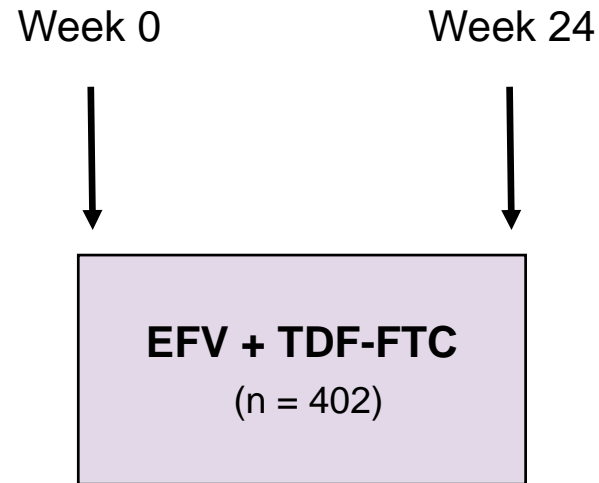
Switch from EFV + ZDV-3TC versus EFV + TDF-FTC
COMET Trial

Switch from Efavirenz + AZT-3TC to Efavirenz + TDF-FTC

COMET: Study Design

Study Design: COMET Study

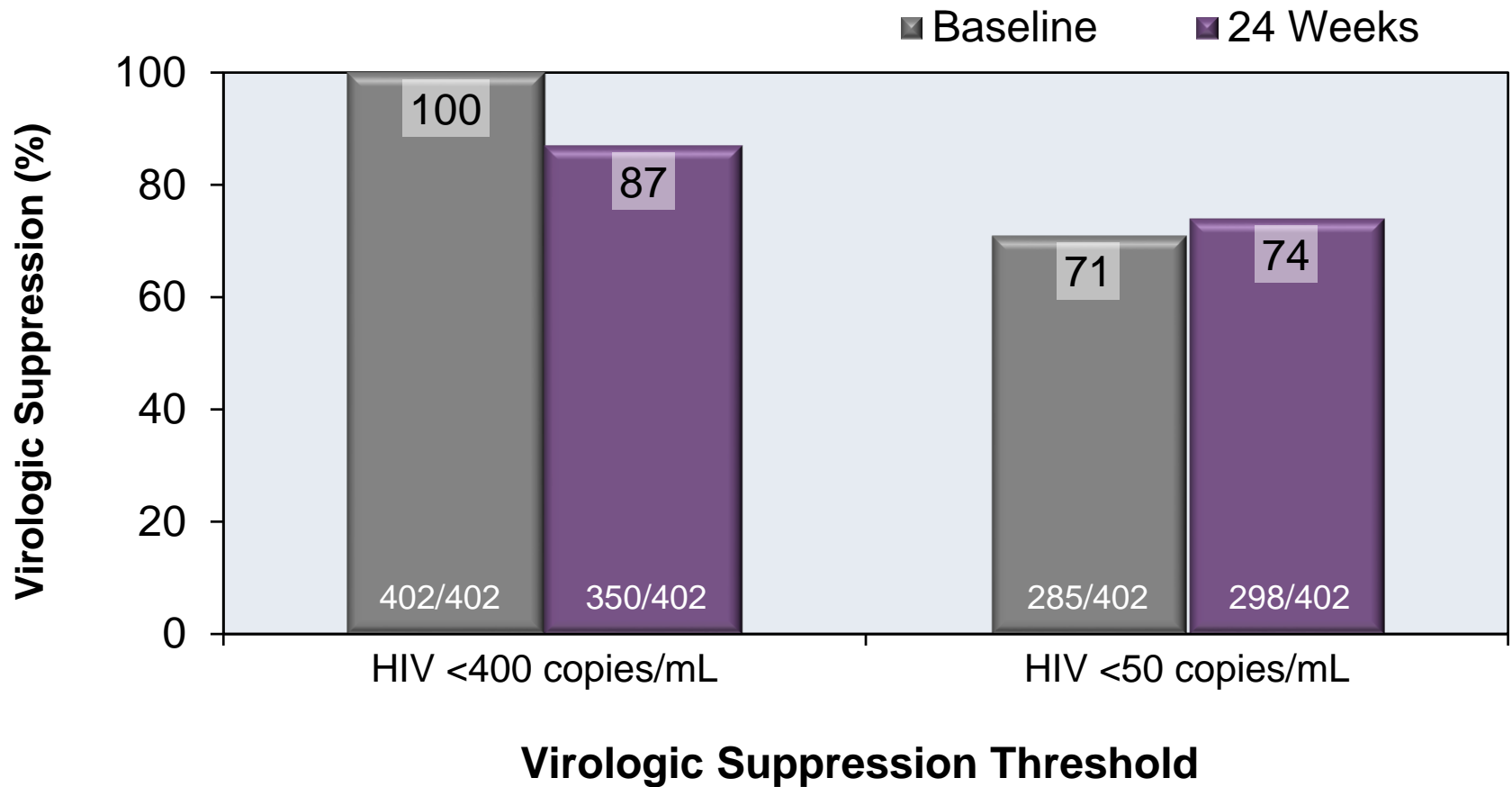
- **Background:** Prospective, single-arm 24-week phase 4 switch study evaluating of switching from twice daily zidovudine-lamivudine to once daily tenofovir DF-emtricitabine in virologically suppressed patients on efavirenz
- **Inclusion Criteria (n = 402)**
 - Age ≥ 18 years
 - On EFV + ZDV-3TC for ≥ 8 weeks
 - HIV RNA < 400 copies/mL
 - CrCl ≥ 50 mL/min
- **Treatment (Switch) Arm**
 - Efavirenz-tenofovir DF-emtricitabine



Switch from Efavirenz + AZT-3TC to Efavirenz + TDF-FTC

COMET: Result

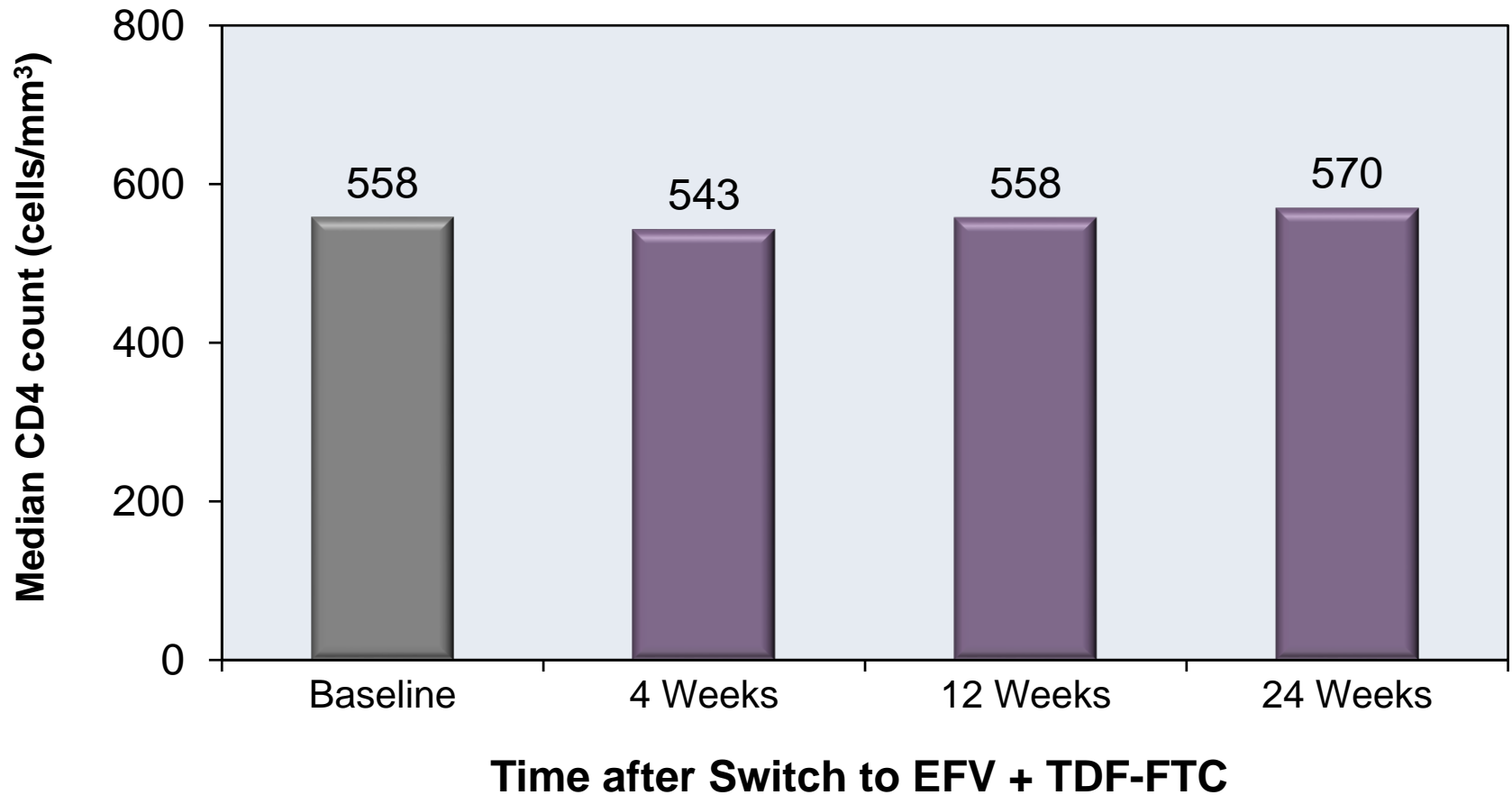
Week 24: Virologic Response



Switch from Efavirenz + AZT-3TC to Efavirenz + TDF-FTC

COMET: Result

Week 24: Immunologic Response

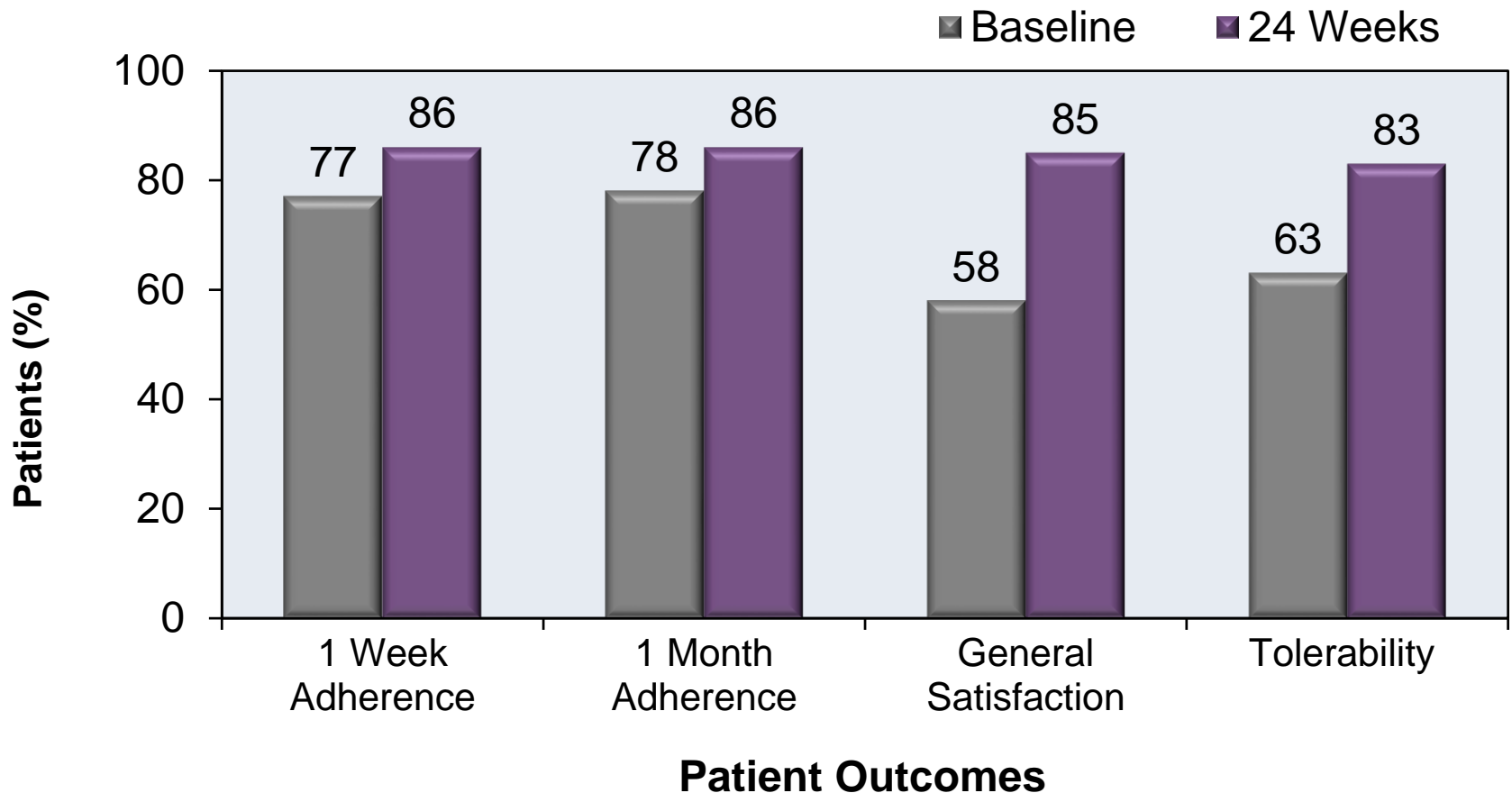


Source: DeJesus E, et al. HIV Clin Trials. 2008;9:103-14.

Switch from Efavirenz + AZT-3TC to Efavirenz + TDF-FTC

COMET: Result

Week 24: Patient-Reported Outcomes



Switch from Efavirenz + AZT-3TC to Efavirenz + TDF-FTC

COMET: Conclusions

Interpretation: “Patients switched to EFV + TDF/FTC maintained virologic suppression and the regimen was well tolerated. Patients reported increased satisfaction with treatment and fewer were bothered by side effects.”

Acknowledgment

The **National HIV Curriculum** is an AIDS Education and Training Center (AETC) Program supported by the Health Resources and Services Administration (HRSA) of the U.S. Department of Health and Human Services (HHS) as part of an award totaling \$800,000 with 0% financed with non-governmental sources. This project is led by the University of Washington's Infectious Diseases Education and Assessment (IDEA) Program.

The content in this presentation are those of the author(s) and do not necessarily represent the official views of, nor an endorsement, by HRSA, HHS, or the U.S. Government.

